

Readme

1. Document:

1. installViewPowerMini_Mac_i386.zip is installer for ViewPowerMini software
2. Kext_Helper_b7.zip is tool to install USB driver
3. UPSVendor.zip is USB driver

2. Installation:

1. Extract Kext_Helper_b7.zip and UPSVendor.zip.

2. Install USB driver

Before installing ViewPowerMini software, please install USB driver first. The installation steps are listed below:

Step 1 Double click the icon of kext Helper b7. Refer to Diagram 1.

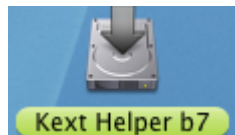


Diagram 1

Step 2 It will pop up a dialog as Diagram 2.

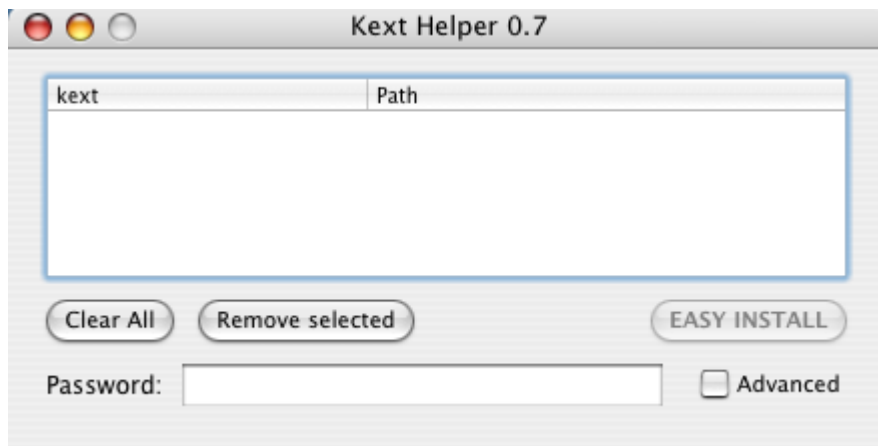


Diagram 2

Step 3 Drag and release "UPSVendor.kext" document shown as Diagram 3 into the dialog.



Diagram 3

Step 4 Then the document will be displayed in the table as Diagram 4.

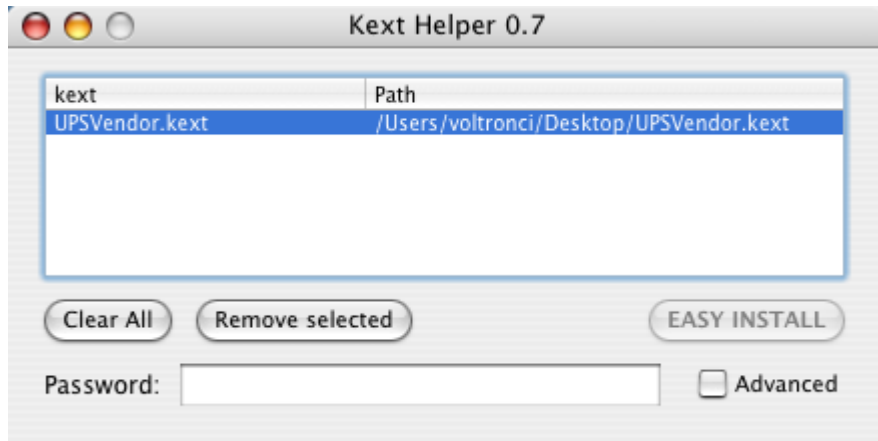


Diagram 4

Step 5 Enter user password and click "EASY INSTALL" button to install USB driver. Refer to Diagram 5.

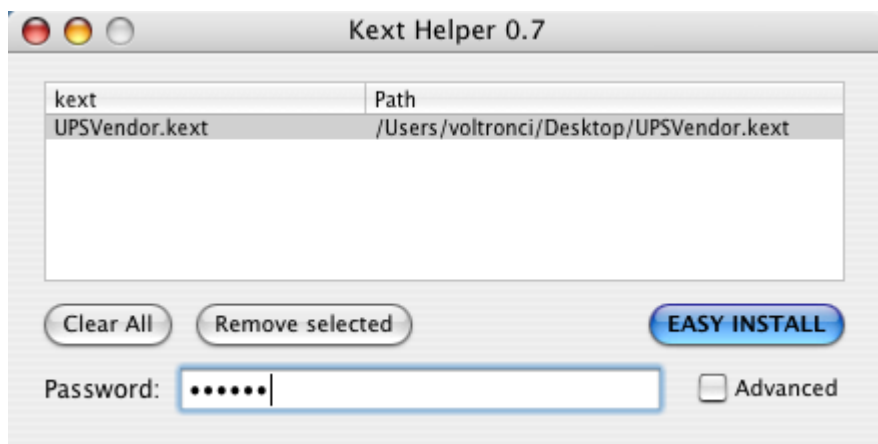


Diagram 5

Step 6 USB Driver Installation is complete.

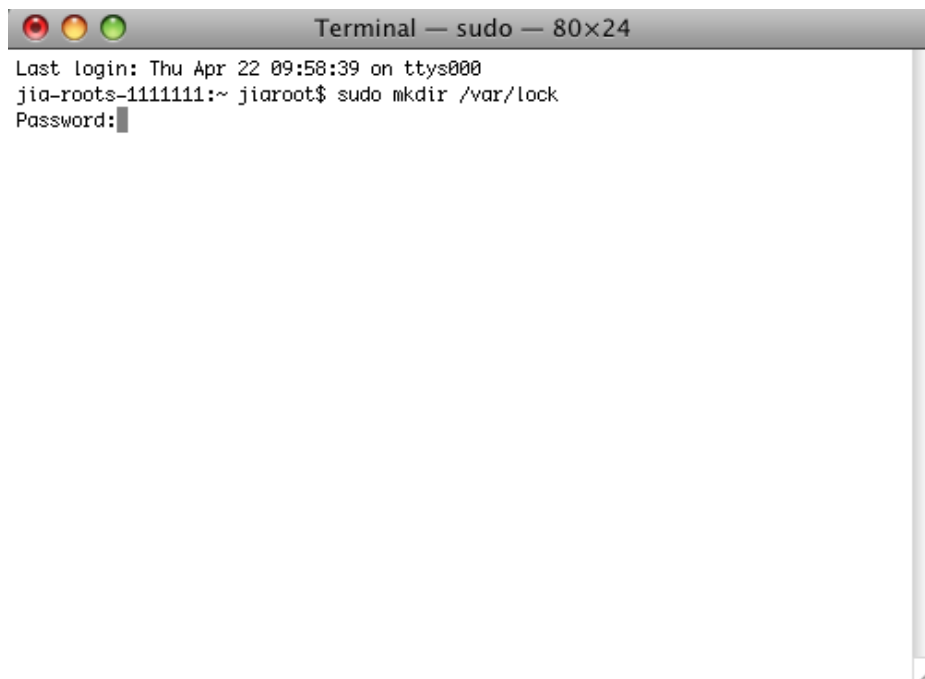
3. COM port environment configuration

Step 1 Open Terminal tool.



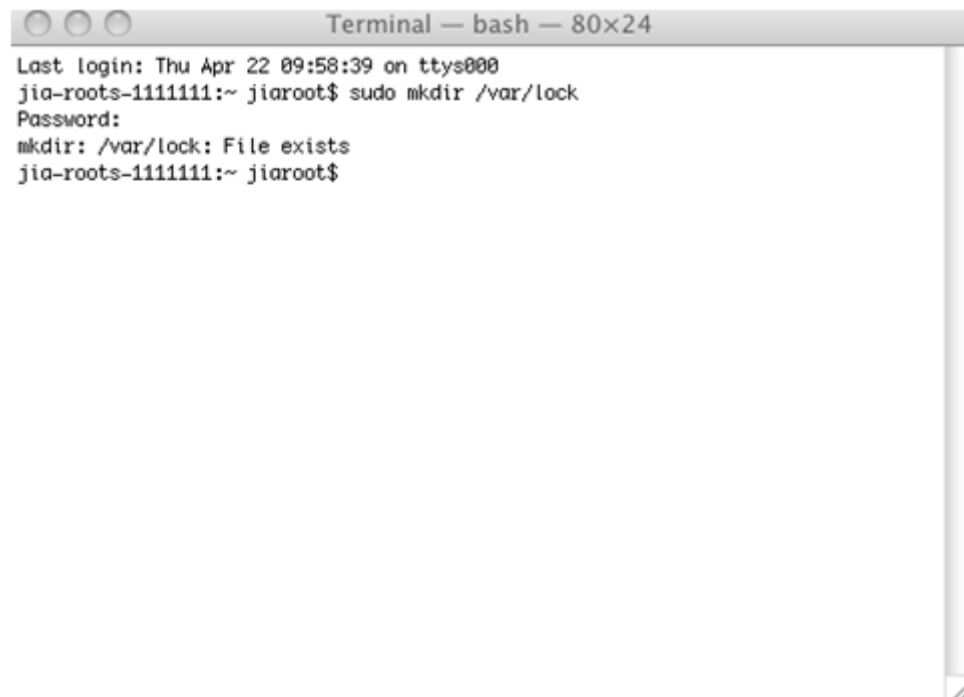
```
Terminal — sudo — 80x24
Last login: Thu Apr 22 09:58:39 on ttys000
jia-roots-1111111:~ jiaroot$
```

Step 2 Key in "Sudo mkdir /var/lock".



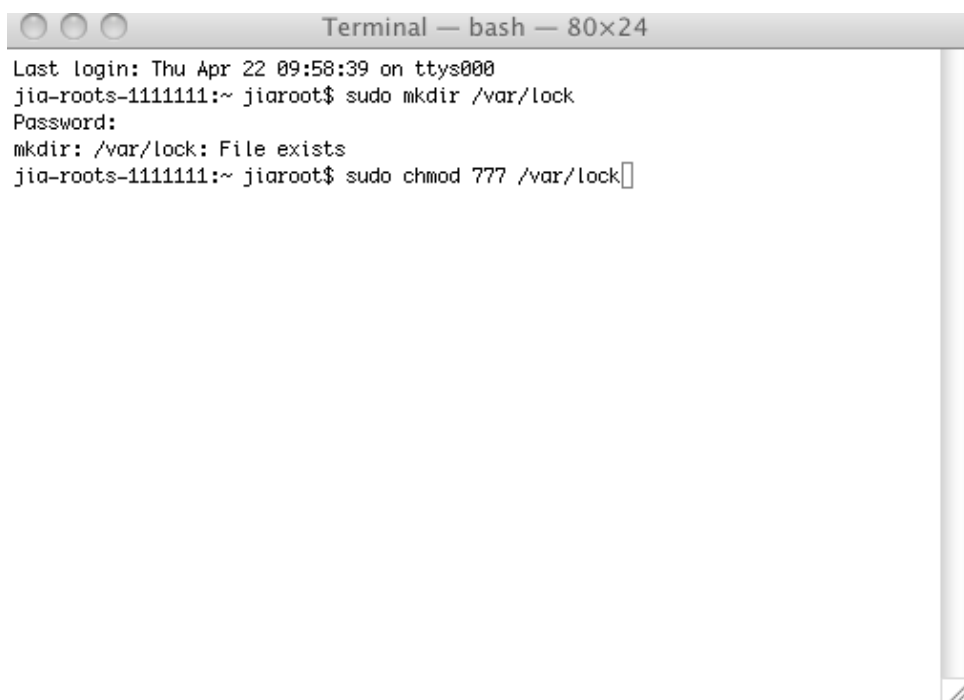
```
Terminal — sudo — 80x24
Last login: Thu Apr 22 09:58:39 on ttys000
jia-roots-1111111:~ jiaroot$ sudo mkdir /var/lock
Password:
```

Step 3 Key in Password.



```
Terminal — bash — 80x24
Last login: Thu Apr 22 09:58:39 on ttys000
jia-roots-1111111:~ jiaroot$ sudo mkdir /var/lock
Password:
mkdir: /var/lock: File exists
jia-roots-1111111:~ jiaroot$
```

Step 4 Key in “sudo chmod 777 /var/lock” again.



```
Terminal — bash — 80x24
Last login: Thu Apr 22 09:58:39 on ttys000
jia-roots-1111111:~ jiaroot$ sudo mkdir /var/lock
Password:
mkdir: /var/lock: File exists
jia-roots-1111111:~ jiaroot$ sudo chmod 777 /var/lock
```

Step 5 COM port environment configured.

4. Extract installViewPowerMini_Mac_i386.zip and double click the extracted file to install ViewPowerMini software.

5. ViewPowerMini installation completed.